

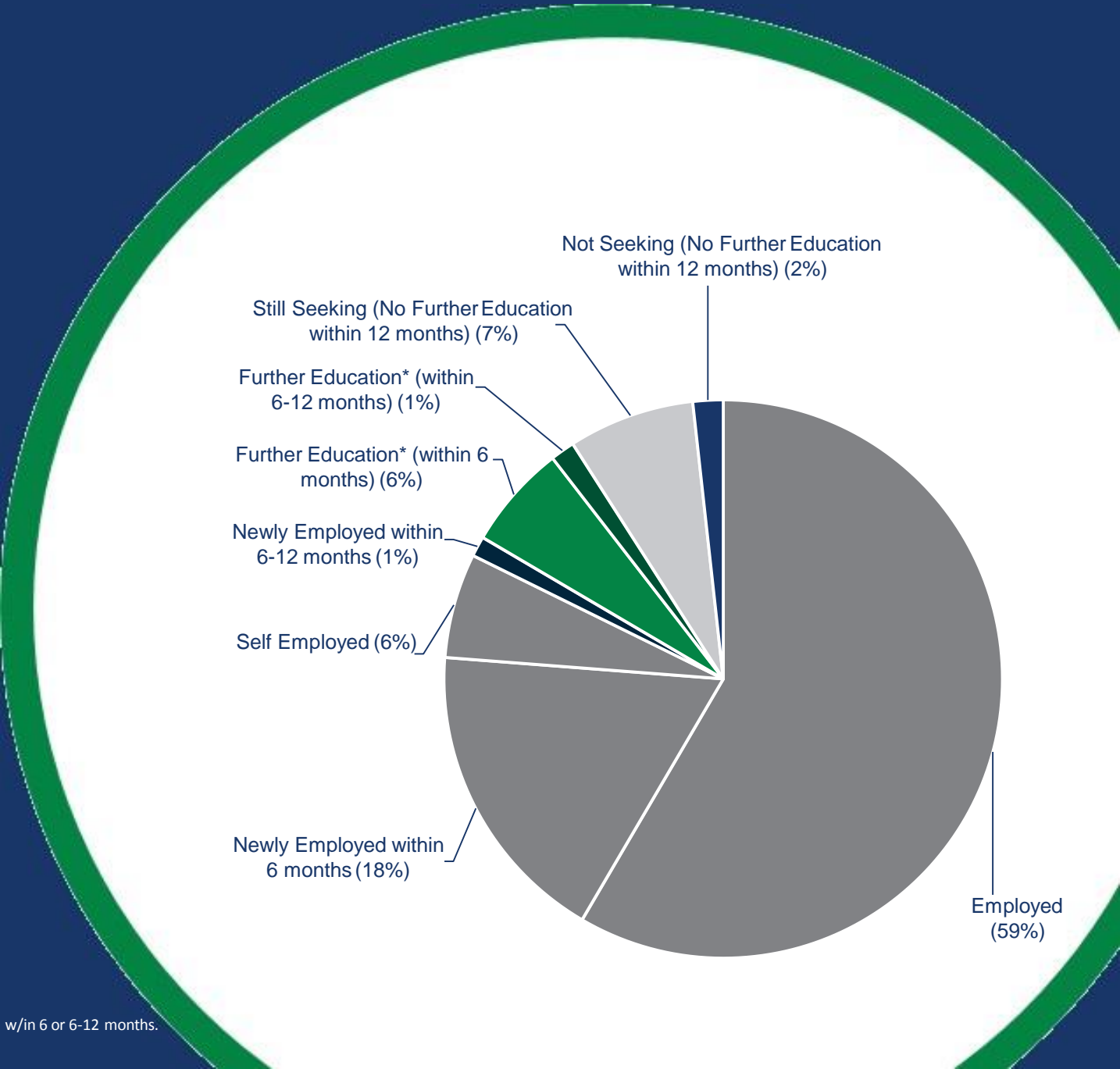


HB886 Consumer Information  
2018 Graduate Outcomes  
June 2019



Christian Leadership  
to Change the World

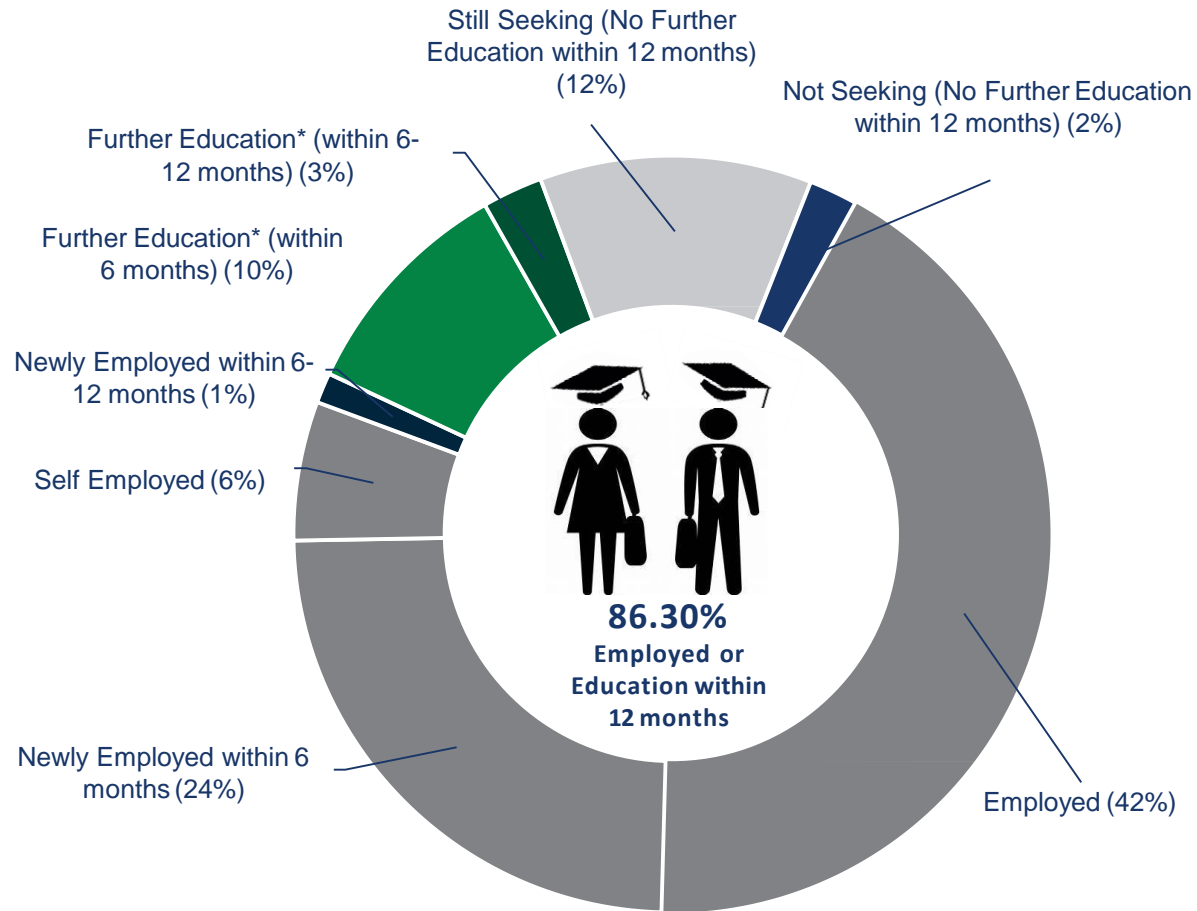
# 2018 Graduate Outcomes



\* Further Education refers to grads that reported either still seeking or not seeking employment AND continuing education w/in 6 or 6-12 months.

# College of Arts & Sciences

## 2018 Graduate Outcomes

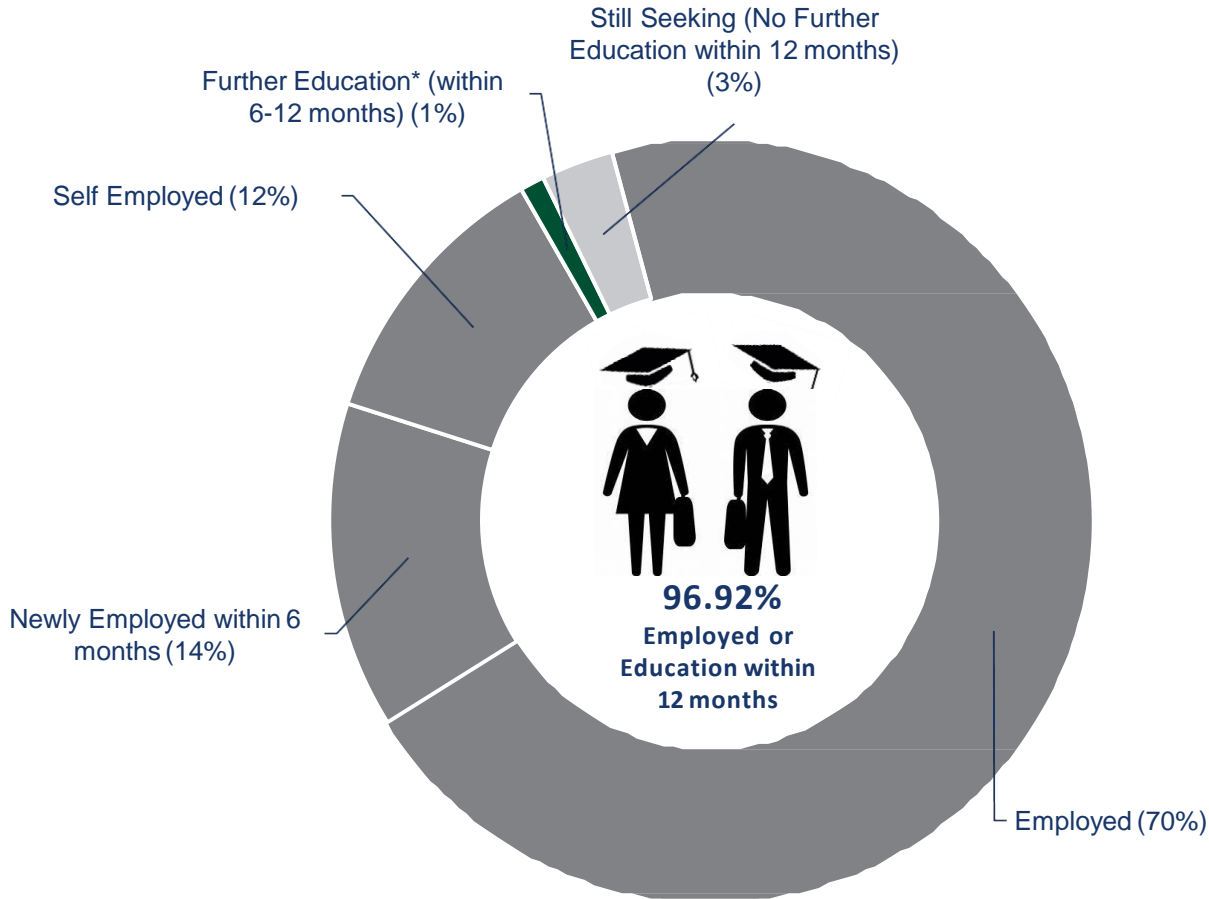


College of Arts & Sciences		
2018 Graduates		
	Employed	164
	Newly Employed (within 6 months)	94
	Self Employed	23
	Newly Employed (within 6-12 months)	5
	Further Education* (within 6 months)	38
	Further Education* (within 6-12 months)	10
	Still Seeking (No Further Education within 12 months)	45
	Not Seeking (No Further Education within 12 months)	8
	<b>Total CAS Self-Reported</b>	<b>387</b>
	Non Respondents:	227
	<b>Total Graduates:</b>	<b>614</b>

\* Further Education refers to grads that reported either still seeking or not seeking employment AND continuing education w/in 6 or 6-12 months.

# School of Business & Leadership

## 2018 Graduate Outcomes

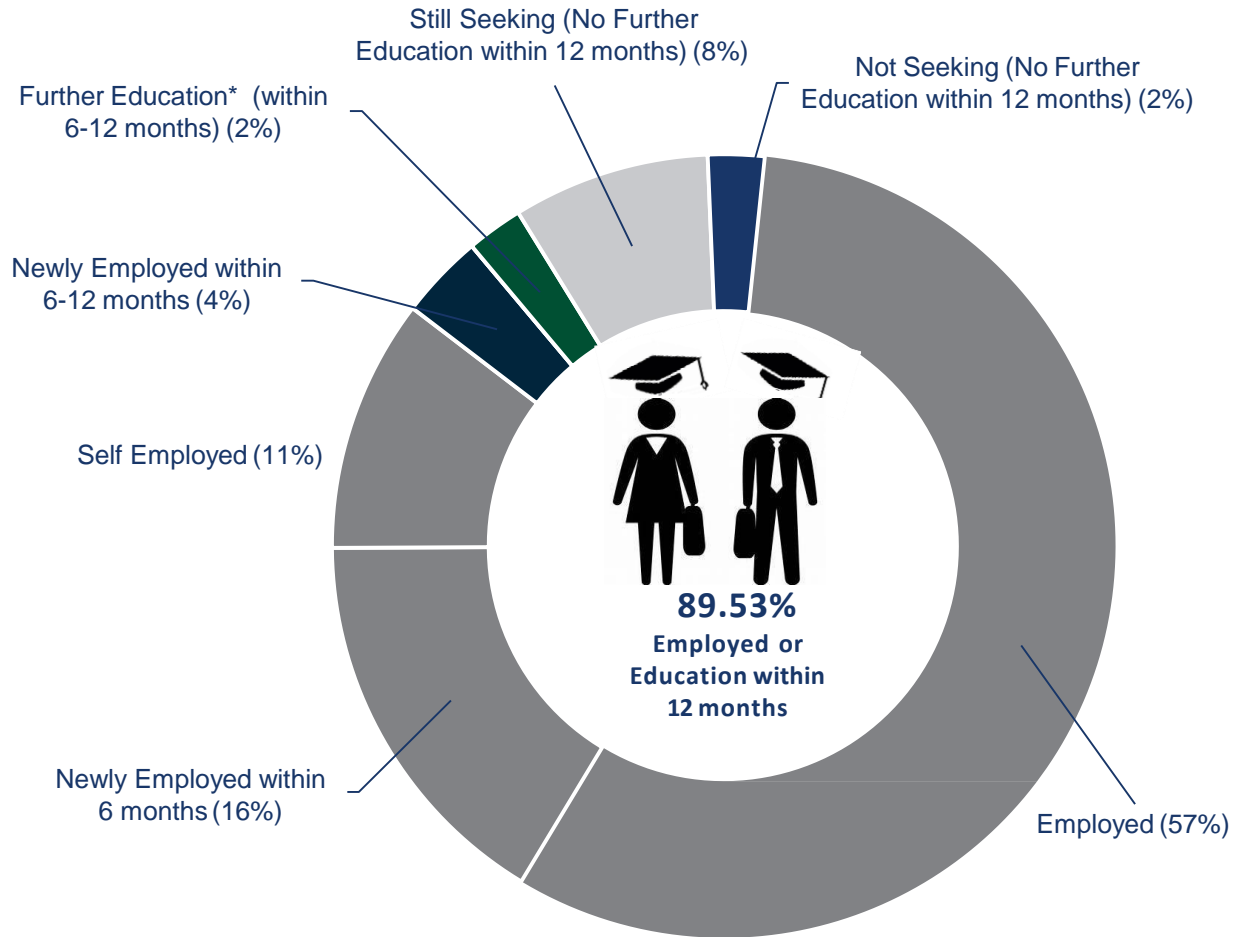


School of Business & Leadership		
2018 Graduates		
	Employed	137
	Newly Employed (within 6 months)	27
	Self Employed	23
	Newly Employed (within 6-12 months)	0
	Further Education* (within 6 months)	0
	Further Education* (within 6-12 months)	2
	Still Seeking (No Further Education within 12 months)	6
	Not Seeking (No Further Education within 12 months)	0
	<b>Total SBL Self-Reported</b>	<b>195</b>
	Non Respondents:	73
	<b>Total Graduates:</b>	<b>268</b>

\* Further Education refers to grads that reported either still seeking or not seeking employment AND continuing education w/in 6 or 6-12 months.

# School of Communications & The Arts

## 2018 Graduate Outcomes

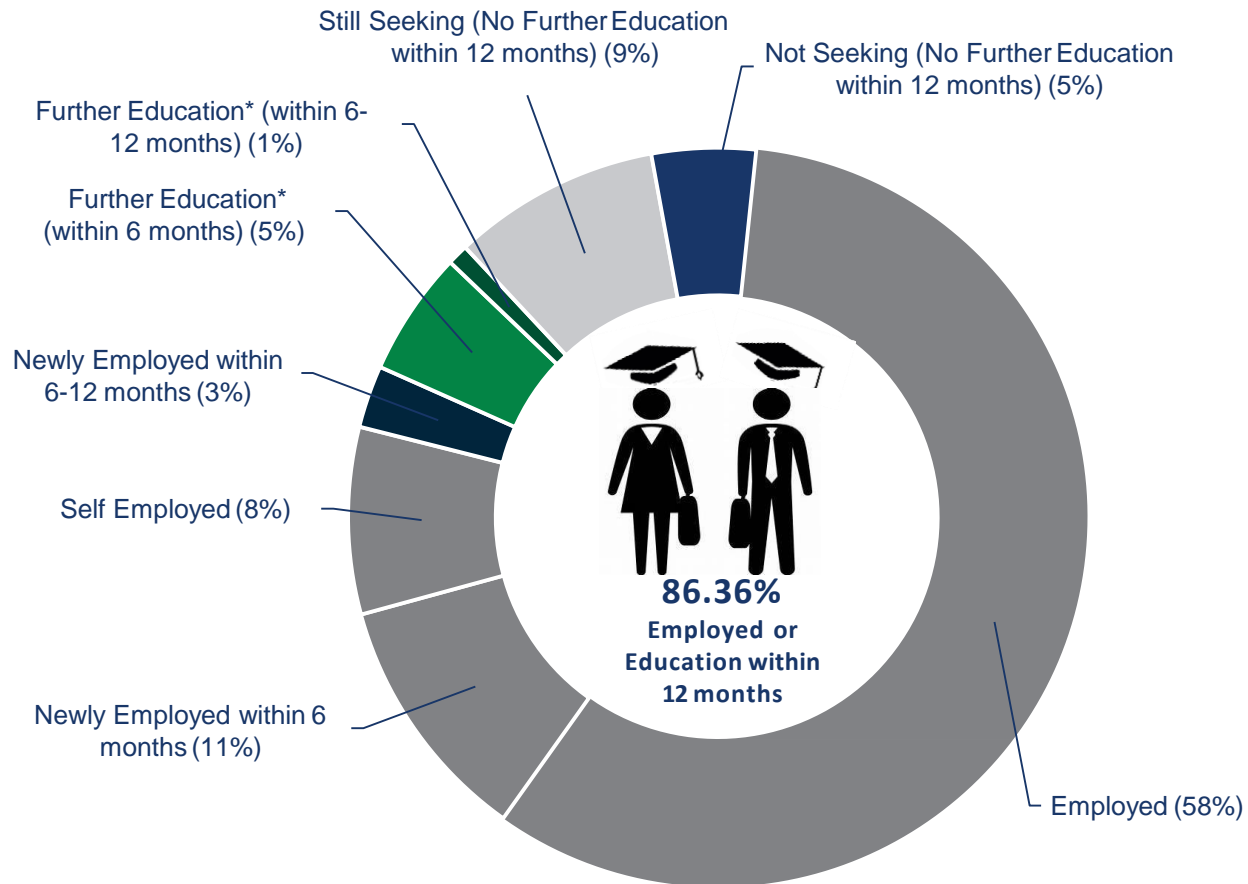


School of Communications & The Arts		
2018 Graduates		
	Employed	49
	Newly Employed (within 6 months)	14
	Self Employed	9
	Newly Employed (within 6-12 months)	3
	Further Education* (within 6 months)	0
	Further Education* (within 6-12 months)	2
	Still Seeking (No Further Education within 12 months)	7
	Not Seeking (No Further Education within 12 months)	2
	<b>Total COM Self-Reported</b>	<b>86</b>
	Non Respondents:	35
	<b>Total Graduates:</b>	<b>121</b>

\* Further Education refers to grads that reported either still seeking or not seeking employment AND continuing education w/in 6 or 6-12 months.

# School of Divinity

## 2018 Graduate Outcomes

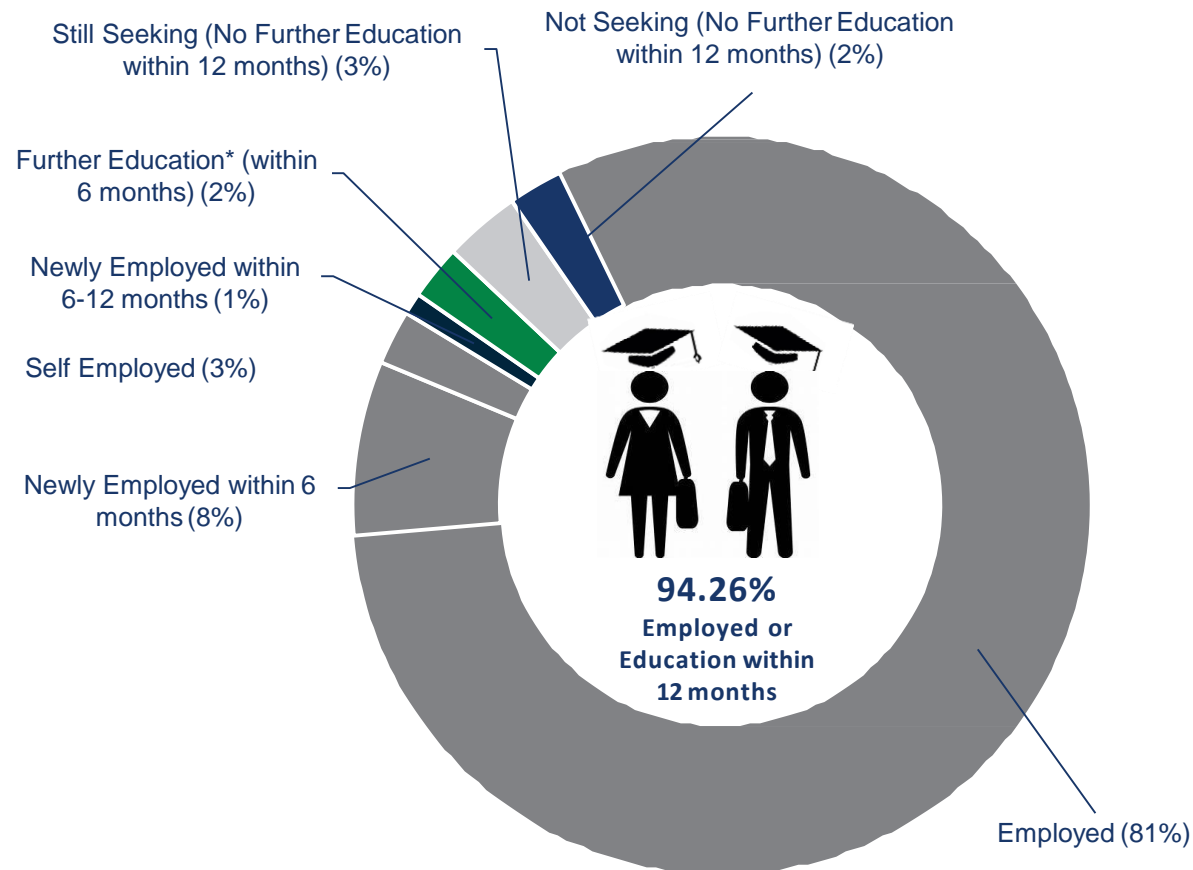


School of Divinity		
2018 Graduates		
	Employed	64
	Newly Employed (within 6 months)	12
	Self Employed	9
	Newly Employed (within 6-12 months)	3
	Further Education* (within 6 months)	6
	Further Education* (within 6-12 months)	1
	Still Seeking (No Further Education within 12 months)	10
	Not Seeking (No Further Education within 12 months)	5
	<b>Total DIV Self-Reported</b>	<b>110</b>
	Non Respondents:	51
	<b>Total Graduates:</b>	<b>161</b>

\* Further Education refers to grads that reported either still seeking or not seeking employment AND continuing education w/in 6 or 6-12 months.

# School of Education

## 2018 Graduate Outcomes



### School of Education

2018 Graduates

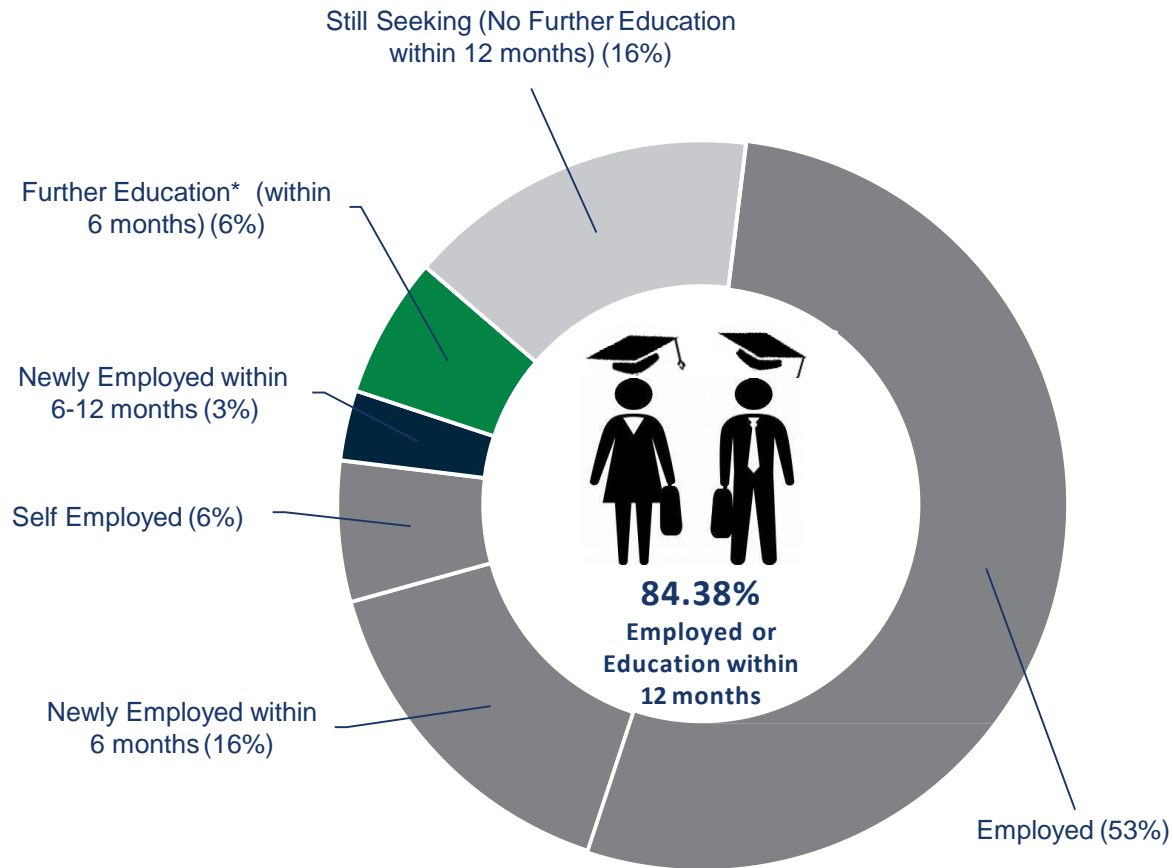
	Employed	169
	Newly Employed (within 6 months)	16
	Self Employed	5
	Newly Employed (within 6-12 months)	2
	Further Education* (within 6 months)	5
	Further Education* (within 6-12 months)	0
	Still Seeking (No Further Education within 12 months)	7
	Not Seeking (No Further Education within 12 months)	5
	<b>Total EDU Self-Reported</b>	<b>209</b>
	Non Respondents:	121
	<b>Total Graduates:</b>	<b>330</b>

\* Further Education refers to grads that reported either still seeking or not seeking employment AND continuing education w/in 6 or 6-12 months.



# Robertson School of Government

## 2018 Graduate Outcomes



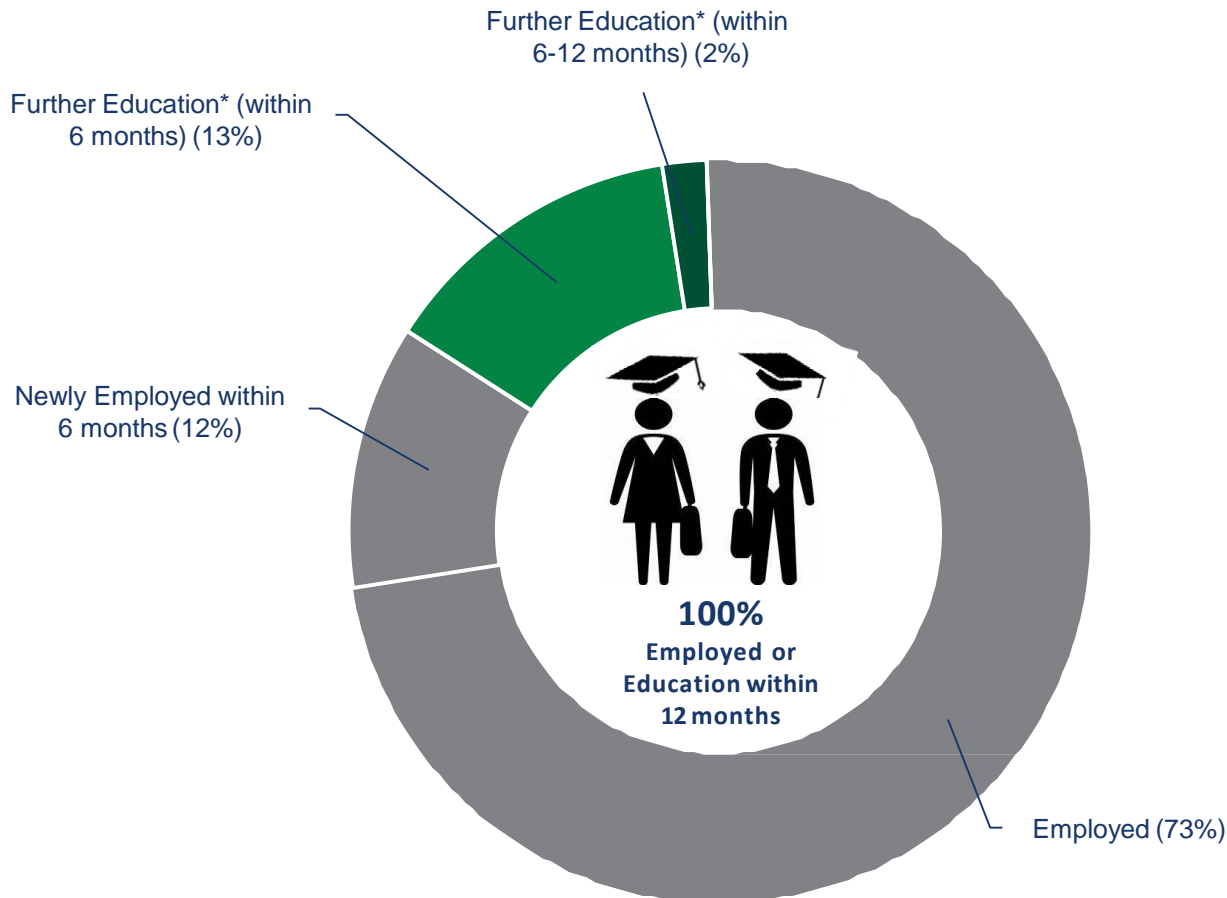
Robertson School of Government		
2018 Graduates		
	Employed	17
	Newly Employed (within 6 months)	5
	Self Employed	2
	Newly Employed (within 6-12 months)	1
	Further Education* (within 6 months)	2
	Further Education* (within 6-12 months)	0
	Still Seeking (No Further Education within 12 months)	5
	Not Seeking (No Further Education within 12 months)	0
	<b>Total GOV Self-Reported</b>	<b>32</b>
	Non Respondents:	20
	<b>Total Graduates:</b>	<b>52</b>

\* Further Education refers to grads that reported either still seeking or not seeking employment AND continuing education w/in 6 or 6-12 months.



# Law School – MA Only

## 2018 Graduate Outcomes

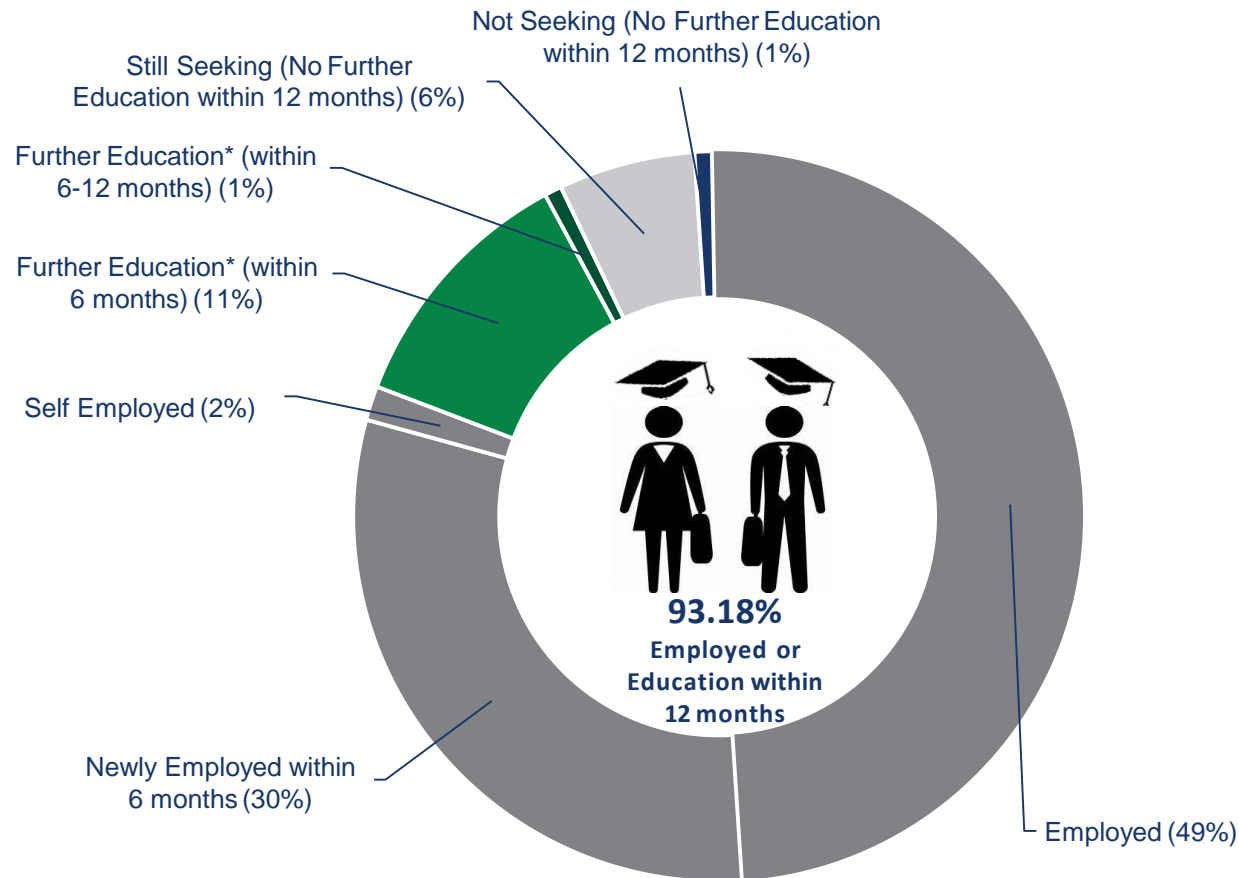


Law School (MA Only)		
2018 Graduates		
	Employed	38
	Newly Employed (within 6 months)	6
	Self Employed	0
	Newly Employed (within 6-12 months)	0
	Further Education* (within 6 months)	7
	Further Education* (within 6-12 months)	1
	Still Seeking (No Further Education within 12 months)	0
	Not Seeking (No Further Education within 12 months)	0
	<b>Total LS Self-Reported</b>	<b>52</b>
	Non Respondents:	33
	<b>Total Graduates:</b>	<b>85</b>

\* Further Education refers to grads that reported either still seeking or not seeking employment AND continuing education w/in 6 or 6-12 months.

# School of Psychology & Counseling

## 2018 Graduate Outcomes

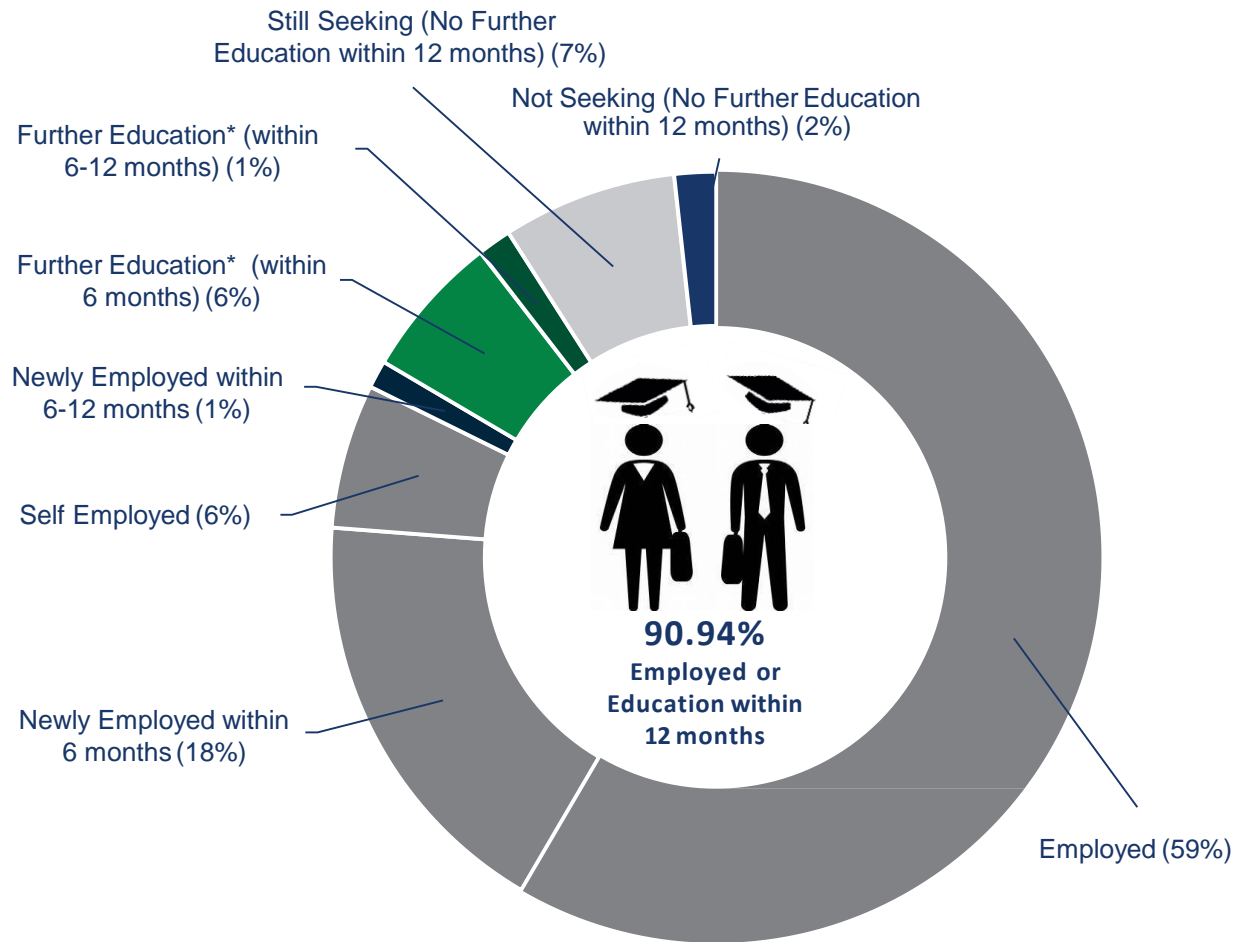


School of Psychology & Counseling		
2018 Graduates		
	Employed	65
	Newly Employed (within 6 months)	40
	Self Employed	2
	Newly Employed (within 6-12 months)	0
	Further Education* (within 6 months)	15
	Further Education* (within 6-12 months)	1
	Still Seeking (No Further Education within 12 months)	8
	Not Seeking (No Further Education within 12 months)	1
	<b>Total SPC Self-Reported</b>	<b>132</b>
	Non Respondents:	47
	<b>Total Graduates:</b>	<b>179</b>

\* Further Education refers to grads that reported either still seeking or not seeking employment AND continuing education w/in 6 or 6-12 months.

# All 2018 Graduates

## 2018 Graduate Outcomes



All 2018 Graduates		
2018 Graduates		
	Employed	703
	Newly Employed (within 6 months)	214
	Self Employed	73
	Newly Employed (within 6-12 months)	14
	Further Education* (within 6 months)	73
	Further Education* (within 6-12 months)	17
	Still Seeking (No Further Education within 12 months)	88
	Not Seeking (No Further Education within 12 months)	21
	<b>Total All 2018 Grads Self-Reported</b>	<b>1203</b>
	Non Respondents:	607
	<b>Total Graduates:</b>	<b>1810</b>

\* Further Education refers to grads that reported either still seeking or not seeking employment AND continuing education w/in 6 or 6-12 months.



# Office of Career & Talent Management

---

Communications Building Suite 250  
[ctm@regent.edu](mailto:ctm@regent.edu) 757.352.4926



Christian Leadership  
to Change the World